



# Southside Manor

10745 29 Ave NW  
Edmonton, AB T6J 5H6

# A beautiful independent living community to call home



- Newly renovated 1 bedroom and 2 bedrooms available
- Social Room for gatherings and events
- Games Room with pool table and TV
- Daily activities with our lifestyle coordinator, or join in with friends and neighbours

## Flexible meal plans!

*All rent includes a base meal program at \$218/month (15 meals/month)*

### Spacious Dining Room

Don't feel like heading down to dinner? Order takeout and have it delivered to your suite for a small fee.

Short on a few grocery items? Call The restaurant to order from a small grocery list, including Bread, Milk, Eggs, Fruit, Etc. (*\$30 maximum per month.*)

Bringing your family or friends to dinner? Pre-book with dining services anytime.

- Guest suites: available
- Chapel services & hymn Sings offered regularly
- Game and library area located on lower level, accessible by elevator
- Puzzles & books available for residents to enjoy in the social room
- Shopping & restaurants within walking distance
- Snack & refreshments available for purchase in the dining area
- Available housekeeping, laundry service and bed change.

# Our Suites

All newly renovated with vinyl plank flooring, new light fixtures, curtains, walk-in showers, and full kitchens.

All suites feature large, bright windows and an open living and dining space.

- **1 Bedroom**

Living and dining space, bright open full kitchen, large bedroom, large closet space, sizable linen/storage.

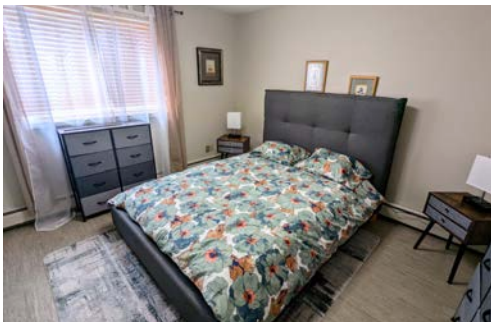
- **2 Bedroom**

Living and dining space with large closets in both bedrooms and ample storage space, balcony or walk-out patio.

*\*2<sup>nd</sup> occupant in suite \$275*

*\*Heat and water included*

*\*Emergency lifeline included*



## Life in a Christian community.

Living in the community of Southside Manor gives you a sense of belonging. Join your neighbours in daily activities, share a meal, Maybe head down to the Tuesday Coffee Club or join friends in a puzzle



Scan for Suite Plans!

# A Community To Call Home

Shepherd's Gardens is a leader in providing independent living options that enrich the lives of adults in the Edmonton metropolitan region. Rooted in the Christian community, our comfortable, safe homes build vibrant communities for our residents by providing access to recreational programming and meaningful spiritual support.



shepherdsgardens.ca  
leasing@shepherdsgardens.ca  
587-596-0580